

# ANNE FRANK FORWARD

December 2017  
Volume 4

## Anne Frank PS

431 Ilan Ramon Blvd  
Maple, ON L6A 0X2  
P: (289) 342-1001  
F: (289) 553-5642

Office Hours: 8:15 am—4:15 pm

### Principal:

Ms. E. Lau  
(289) 342-1001 x182

### Vice-Principal:

Mr. D. Chester  
(289) 342-1001 x183

### Elementary Office Administrative Assistant:

Ms. S. Infanti  
(289) 342-1001 x180

### School Admin Support:

Ms. L. Bivic  
(289) 342-1001 x181

Ms. P. Kitagawa  
(289) 342-1001 x188

### Superintendent:

Mr. T. Dungey  
905-764-6830

### Trustee:

Mrs. L. Aversa  
647-462-0921

## Contents

Welcome	P1
Trustee Message	P2
Report Diseases	P2
Washing Hands	P3
School Council News	P3
Parking Lot News	P4
Reporting Absences/ Lates	P4
Lake St. George Trip	P5
Eco School Reminder	P5
Lunch Assistants	P5
School Bus Cancellation	P6
Notice	
French News	P7
Combination Locks	P7
Progressive Discipline	P8
Restorative Approaches	P9
Calendar	P10

## December News!

Dear Families,

It is hard to believe that we have completed 3 months of school and there are only 3 weeks to the winter holidays! Anne Frank Public School has been an incredibly busy place this fall. Our students have been involved with volleyball tournaments, basketball tryouts, visiting authors, Grade 7 Lake St. George overnight trip, Lion Pride assemblies, junior classes watching the movie *Wonder* at the Promenade Mall, and the Scholastic Book Fair. As well, we have the primary concert coming up on December 5th and 6th. This is only a small sample of all the activities that our students and staff are involved with this school year.

Much more to come!

After such a busy period of time it is important for students to assess their accomplishments and plan their next steps. Using the your child's progress report card can be an important tool for planning. Setting goals with your child can be a great motivator for future success.

Lastly we wish all our families a safe and restful holiday. For those who are celebrating Christmas, Chanukah, Kwanzaa and other special days over the next few weeks, have a joyous holiday celebration. The staff at Anne Frank Public School are looking forward to continuing the learning journey with your children in the new year.

*Sincerely,*

*Elizabeth Lau, Principal and Doug Chester, Vice-Principal*



"How wonderful it is that nobody need wait a single moment before starting to improve the world."

Anne Frank

**BE A LEADER! BE A LEARNER! BE A THINKER! HAVE A VOICE! HAVE FUN!**

## Daily Schedule

Staff begins outdoor supervision at 8:55 am.  
Our school day begins promptly at 9:10 am—please be on time!

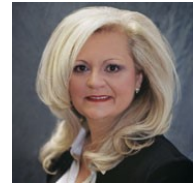
Entry Bell	9:10 am
Period 1	9:10-10:10 am
Period 2	10:10-10:50 am
Recess	10:50-11:20 am
Period 3	11:20-12:20 am
Period 4	12:20-1:00 pm
Lunch	1:00-2:00 pm
Period 5	2:00-2:00 pm
Period 6	3:00-3:40 pm
Dismissal	3:40 pm

## Reportable Diseases to York Region Public Health

We are obligated to report certain Reportable Diseases to York Region Public Health, as are health care providers (e.g., your doctor). Additionally, there are some infectious diseases that put other students and staff at risk if exposed, including Fifth's Disease. If you are not sure, please call the school as a precaution.

Thank you.

**School Bus Information**  
Visit [www.schoolbuscity.com](http://www.schoolbuscity.com) to check routes and times.



## Message From Our Trustee Linda Aversa

In November, about 1,000 students, staff members and community partners came together from across the Board to form a [Ring of Peace](#) and stand together against hate, discrimination and intolerance. The student speakers at the event shared meaningful messages about the importance of feeling welcome, valued and respected.

At York Region District School Board, we are committed to listening to the voices of our students and communities. We will continue working with our school communities to ensure our schools provide safe, welcoming and inclusive environments for everyone.

Last month, our annual [Quest conference](#) brought together educators from across Ontario, Canada and around the world to share, learn and discuss how to foster well-being in schools. Some of the themes covered included equity and inclusivity, and safe and caring environments.

It was a wonderful opportunity to learn more about some of the positive things happening in our own schools and other districts. In recent months, we have had several international visitors come to our system and schools to learn more about the work in our system to support student achievement and well-being, including Qatar, the Netherlands, Texas and the United Kingdom.

We are pleased to have these opportunities to continue highlighting and sharing the great things happening in our schools thanks to our outstanding students, staff members, families and community partners. Your engagement makes a difference in our schools and I encourage you to continue getting involved in the life of your child's school.

As we enter the holiday season, I am once again impressed by the generosity of our school communities and our students' commitment to helping others.

## Handwashing

Children share many items throughout the school day and at home including books, puzzles, computers, water bottles and sports equipment. Sharing can spread germs that can cause sickness, especially during cold and flu season. Correct handwashing is the best way to prevent the spread of infection.

To help keep the people in your home healthy, follow these simple steps:

- Encourage children to sneeze into the bend of their arm rather than into their hands
- Make time for handwashing, especially before eating, after using the bathroom, blowing your nose, sneezing, handling garbage, touching animals, playing outdoors or visiting someone who is sick
- Wash your hands whenever they look or feel dirty



Together we can make the healthy choice the easy one!

For more information about preventing infections and proper handwashing, visit [york.ca/preventinginfections](http://york.ca/preventinginfections)

This material is provided by York Region Public Health.

## The School Council is Looking for Volunteers.

### **Volunteers Needed! A Message from Anne Frank's School Council**

We on School Council feel that a great way for parents/guardians in the community to get involved is through volunteering. There is no financial obligation, nor is there a need for regular commitment. We often have the need for one time volunteers, be it a fundraiser like the personalized cards or Fresh from the Farm, or events like the Fun Fair or our Dance-a-Thon.

Anyone who thinks that they might be able to lend a hand is asked to email: [annefrankschoolcouncil@gmail.com](mailto:annefrankschoolcouncil@gmail.com)

Please include your name, your phone number and any other contact information you deem relevant. When we are in need of volunteers we will email you and if you are available to, we will gladly take the help!

This is an excellent opportunity to become more involved within the school and the community. We always appreciate the time and the help that others contribute to our kids, our school and our neighbourhood. Thank you!

**Next School Council Meeting: Wednesday, January 10th, 2018 at 7 pm in the library**

## School Parking Lot News



### **Absences/Lates**

Reporting your child absent or late by the following easy methods:

Call into the automated interactive telephone system **(1-855-203-2994)** through which absences can be reported.

Log into the website, [yorkrdsb.schoolconnects.com](http://yorkrdsb.schoolconnects.com)

Parents/Guardians who have authenticated their accounts and have either an iOS or Android device can download an app that can be used to report absences.

**Please remember to report your child late or absent before 9:10 a.m. in order to avoid the auto-mated attendance phone calls that will follow.**

**If you are going to be away for an extended holiday, please report the absence in advance!**



The parking lot is meant for families to quickly pick up or drop off their children by the sidewalk. Unfortunately we have seen a number of unsafe driving behaviours in our school parking lot. Some of the worrisome behaviors observed include cars being left unattended with their motors still running, cars triple parked blocking in other cars that are trying to leave the Kiss N' Ride, drivers using their cellphones while their vehicle is in motion.

We all want the school to be safe for everyone especially our students.

### **Remember:**

- When using the Kiss and Ride, drivers must stay in their car when picking up their child. Cars may not be left unattended.
- If you know your child will not be ready at dismissal then arrive at 3:45 pm instead of 3:40 pm.
- There is lots of parking available on the street. Walking to the school from your car is an excellent form of exercise and is faster than being stuck in the traffic jam in the parking lot.
- If you cannot find a spot by the sidewalk drive around the loop until a spot becomes available, double parking is unsafe and not allowed! Staff will be asking drivers to move their vehicles.
- Obey the signs posted around the parking lot.
- Stay alert and watch for students



" My favourite part of the Lake St. George trip was when we played the survival instincts game. I enjoyed this game the most because it was almost a replica of the Hunger Games, a book series of which I was very fond.... I learned much about being environmentally considerate and I learned that leaving home isn't so bad." William D.

"During the Lake St. George trip we connected with our peers since we needed each other's help in every activity." Naaya P.

"The learning was different because we did games that helped us understand what we were instructed to do. I learned well because we did it in a fun way!"

Elad N.

"My favourite part of this trip was the history activity. We played and traded things. We needed to find the punch for each "town" and get "stuff" to trade with them. I learned about the history of New France and how dome people lived and survived... We wanted to learn and the learning was fun" Megan F.

## **Lunch Assistants Wanted!**

A School Assistant (a.k.a. Lunch Assistant) is a community member hired by the school board to supervise students in designated areas over the lunch hour (1:00 p.m. – 2:00 p.m.). This is a paid position that will be filled by “regular staff” who will be scheduled in consistently, and “casual staff” who will be called in as needed.

School Assistants are important to our school. They provide a sense of community, support, and most importantly safety to the students over the lunch hour. We welcome you to apply to be a School Assistant at Anne Frank P.S.!

Application packages can be picked up at the school office during school hours.

## Helpful Hints

### **Eco School Reminder**

The office has noticed an increasing number of students who are asking the office for spoons and forks as they have forgotten to pack them with their lunches. Families are asked to ensure they pack the necessary cutlery with their child's lunch.

Reusable spoons and forks can be taken home by students to be washed and reused. Plastic spoons and forks end up in the garbage and contribute to filling up land fills.

Please do your best to remember to have your child pack the utensils they need for snacks and lunch!





## School Bus Cancellation Notice

To ensure the safety of students, school bus service may be cancelled due to inclement weather, extreme temperatures and/or poor road conditions. In these cases, parents and students should develop alternate care/transportation arrangements.

Cancellation decisions will only be made after thorough consultation with the Safety Officers of school bus companies servicing York Region and are based on several factors including precipitation, air temperature, road conditions and weather forecast.

Please note the following;

- A decision to cancel school bus service will be **region-wide** meaning all school buses, vans and taxis will not operate.
- **School bus routes may be cancelled when severe weather may not be affecting all municipalities in York Region.** Both the YRDSB and YCDSB operate many regional educational programs. Students attending these programs are transported over large attendance areas encompassing several municipal boundaries. This limits the ability to cancel bus service using a municipality or zone methodology.
- When bus service is cancelled all school tests and/or examinations will be cancelled and rescheduled.
- Student trips involving the use of school buses will also be cancelled.

Unless otherwise stated, schools will remain open and parents can make arrangements to transport their children to and from school even if school bus service is cancelled. **If buses are cancelled in the morning, they will not operate in the afternoon. Therefore students transported to school by parents will require the same transportation home.**

Parents, students and school staff are asked to access the following radio and television stations after 6:00 a.m. to receive bus cancellation information:

### **RADIO**

590 AM	640 AM	680 AM	860 AM	1010 AM	1050 AM
1540 AM	1580 AM	88.5 FM	89.9 FM	92.5 FM9	3.1 FM
94.9 FM	95.9 FM	97.3 FM	98.1 FM	99.1 FM	99.9 FM
101.1 FM	102.1 FM	104.5 FM	100.7 FM	105.9	107.1 FM



### **TELEVISION**

CITY TV   CTV Barrie   CTV Toronto   CP24   GLOBAL NEWS

A bus cancellation message will also be available at [www.schoolbuscity.com](http://www.schoolbuscity.com) and by calling 1-877-330-3001, or by following @YRDSB and @YCDSB on twitter.

## French News



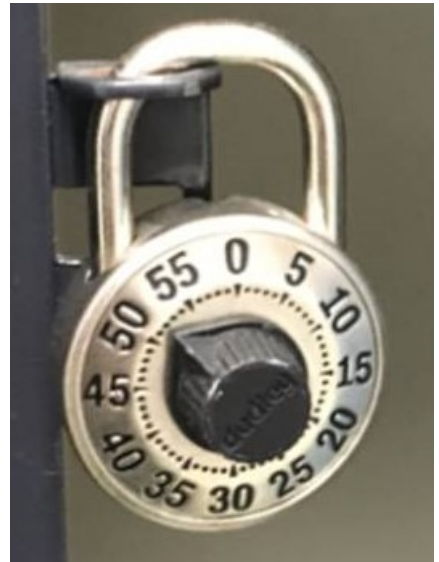
Students in Grade 4 in Mme Murgan's classes are practicing their oral French language skills by having practicing introducing themselves to each other in brief conversations. Students in Grade 5 have been having conversations about their healthy food choices. Please check regularly your child's Google Classroom for assignments, due dates and other pertinent information. Ask your child to show you how they log on to Google Classroom with their yrdsb student [id@gapps.yrdsb.ca](mailto:id@gapps.yrdsb.ca) and their password made of numbers and letters found in their agenda sticker.

## Combination Lock Update

We continue to go through quite a bit of combination locks for our students in grades 6 to 8 who have been assigned lockers. Currently the office has 18 combination locks in stock. Once our current inventory has been depleted Anne Frank Public School will not longer be supplying combination locks for our students.

We will be encouraging students to bring in their own locks as these can be used in the future and into Secondary School.

When students begin bringing in their own combination locks, they will be asked to share the combination with the school. At the end of the school year, students will then take their own locks home.



### Note:

- Anne Frank PS will no longer be providing combination locks for students moving forward.
- Students will be asked to provide their own combination locks.
- Once students bring their own locks they must provide their homeroom teacher with the combinations.

## Restorative Approach/Progress Discipline

At Anne Frank, we use a restorative approach to discipline. When a behaviour concern is reported, the following five restorative questions are asked:

- What happened?
- What were you thinking at the time?
- What have you thought about since?
- Who has been affected and in what way?
- What do you think you need to do to make things right?

Appropriate behaviour is a responsibility shared by all. By using this process, it is our hope that student will begin to repair the damage done to relationships. Depending on the circumstances of each situation, a variety of other consequences may be applied as well.

When we speak about progressive discipline this refers to the range of consequences that may be applied after considering the nature of the offence and the age, past history and development abilities of the student.

Consequences may include:

- |  |  |
|--|--|
| <ul style="list-style-type: none"> <li>Discussion with Teacher, Principal or Vice-Principal</li> <li>Parent contacts/Involvements</li> <li>Restorative Reflection Sheet Assignment</li> <li>Repairing damaged relationships</li> <li>Mediated Conversations</li> <li>Behaviour Contracts</li> <li>Written Action Plan</li> <li>Removal of privilege</li> </ul> | <ul style="list-style-type: none"> <li>Exclusion from optional activities</li> <li>Detention before/during/after school</li> <li>Withdrawal from class</li> <li>Community service</li> <li>Suspension</li> <li>Payment for damages</li> <li>Police involvement</li> <li>Expulsion</li> </ul> |
|--|--|

## **RECOGNITION OF POSITIVE BEHAVIOUR AND DEMONSTRATION OF POSITIVE CHARACTER TRAITS**

We encourage the positive behaviours demonstrated by our students by providing informal rewards such as verbal praise and certificates as well as more formal award presentations. We hold monthly assemblies to recognize the demonstration of positive character traits supported by the Board of Education. Each month celebrates one of the ten traits. Parents/guardians are always welcome to attend.

### **General Expectations**

<b>Respect</b>	<b>Safety/Security</b>	<b>Learning</b>
<ul style="list-style-type: none"> <li>• Respect the right of others</li> <li>• Be kind, caring and helpful</li> <li>• Be honest and fair</li> <li>• Co-operate with others</li> <li>• Respect the property of the school and others</li> </ul>	<ul style="list-style-type: none"> <li>• Follow safety rules on the playground, inside the school and on the buses</li> <li>• Keep your hands and feet to yourself</li> <li>• Weapons or toy weapons are strictly forbidden</li> <li>• Possession of cigarettes, alcohol and illegal drugs is prohibited</li> </ul>	<ul style="list-style-type: none"> <li>• Put forth your best effort at all times</li> <li>• Arrive on time to school and to each class</li> <li>• Come to class with all books and materials</li> <li>• Complete assignment, projects and homework to the best of your ability at all times</li> </ul>

### **Courtesy and Manners**

Use appropriate language at all times, and not verbal, abusive offensive language and/or disrespectful comments. Public displays of affection are not appropriate in the school environment.

### **Environmental Awareness**

Help keep our school a tidy place in which to learn. Place litter in proper containers. Lunch and snacks should be eaten INSIDE the school building and not taken outside.



RESORATIVE APPROACH/PROGRESSIVE DISCIPLINE CONTINUED...

**RESPONSIBILITIES**

**Students are expected to:**

**Parents/Guardians are expected to:**

**Staff are expected to:**

<ul style="list-style-type: none"> <li>• Be aware of, and follow the responsibilities outlined in this Code of Behaviour</li> <li>• Be accountable for their words and actions</li> <li>• Demonstrate a positive attitude and commitment to learning</li> <li>• Be courteous, co-operative, and respectful of self and others Respectful personal, school, and community property</li> <li>• Respect, ethnic, racial, gender, physical and learning differences Use appropriate language at all times</li> <li>• Be prepared for class with materials required for learning</li> <li>• Follow rules and routines established in the classroom</li> </ul>	<ul style="list-style-type: none"> <li>• Teach their child to respect others</li> <li>• Help their child develop a sense of self-worth and caring attitude towards others</li> <li>• Teach their child to accept responsibility and be accountable for their words and actions</li> <li>• To help foster a co-operative partnership with school staff</li> <li>• To ensure that their child understands all elements of the Safe Schools Policy and this Behaviour Code (Read, review and sign together)</li> <li>• To inform the school when their child's behavior may be affected by other circumstances</li> <li>• To support and encourage their child's learning</li> </ul>	<ul style="list-style-type: none"> <li>• Provide the best education possible for each student</li> <li>• Maintain proper order and discipline</li> <li>• Deal with student behavior fairly judiciously, and consistently, using a restorative approach</li> <li>• Be positive role models and to treat students with respect</li> <li>• Help students develop a sense of self-worth and a caring attitude towards others</li> <li>• Model respect for ethnic, racial, religious, physical and learning differences</li> <li>• Communicate and work effectively with parents and students Keep parents/guardians informed and work with parents/guardians to resolve behaviour concerns</li> </ul>
--	---	---

**Physical Expectations**

At Anne Frank, we believe in a HANDS-OFF policy. Student are expected to keep their hands and feet to themselves and avoid activities that are not acceptable include "play-fighting", wrestling, shoving, body-checking, poking, punching, and other forms play in the classrooms, stairwells, hallways and on the playground. During the recess breaks, students may play organized games such as basketball, soccer and foot hockey as well as activities such as skipping and tag. Tackling is not allowed at any time.

**Playground/Field Expectations**

- Play safely. No play fighting or rough play, (i.e., wrestling, piggy-backing, body checking, tripping or violence)
- Play on the assigned paved and field areas (once opened) at the back of the school.
- Stay away from the tree line and parking lot.
- Use the washrooms on the main floor after obtaining a washroom pass
- Leave snow on the ground at all times during snow season
- Leave sticks and leaves on the ground at all times
- Never ride bicycles, rollerblades, or skateboards on school property
- Respect the private property surrounding the school yard – refrain from touching fences
- Care for and return any play equipment borrowed during recess

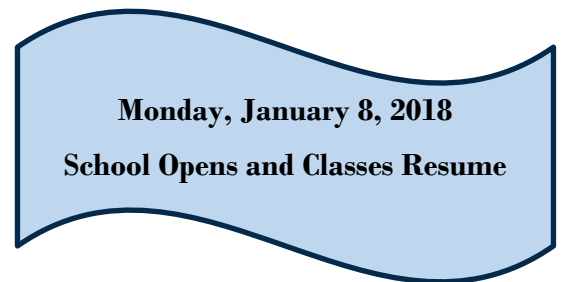
# December 2017



Sun	Mon	Tue	Wed	Thu	Fri	Sat
					1 Day 5	2
3	4 Day 1	5 Day 2 Lion Pride Assembly am Primary Musical 2:15 pm	6 Day 3 Primary Musical 6 pm	7 Day 4	8 Day 5 Gr. 8 Course Selection Presentation	9
10	11 Day 1	12 Day 2	13 Day 3 Chanukah begins	14 Day 4	15 Day 5 BORC Gr 2	16
17	18 Day 1 BORC Gr. 2	19 Day 2	20 Day 3	21 Day 4	22 Day 5 Pajama Day!	23
24	25 Christmas Day	26 Kwanzaa	27	28	29	30
<b>Winter Break (no school December 25 to January 5, 2018)</b>						
31 New Year's Eve						

## Upcoming Dates:

January 8	School Opens— students return to school
January 10	School Council meeting
January 16	Lion Pride Assemblies
January 17	Harriet Tubman Presentation Gr, 1 and 6-8
January 19	PA Day/Kindergarten Registration Begins
January 24, 25	Dental Screening



Character Trait for the Month of December

## Empathy

We strive to sense and appreciate the emotions of others, to "stand in their shoes." We demonstrate appreciation of and concern for their feelings. We try to understand issues from their perspectives even though we may not agree with them personally.

**Follow us!**

**Twitter: @AFPSYR**

**Blog: [annefrankps.com](http://annefrankps.com)**